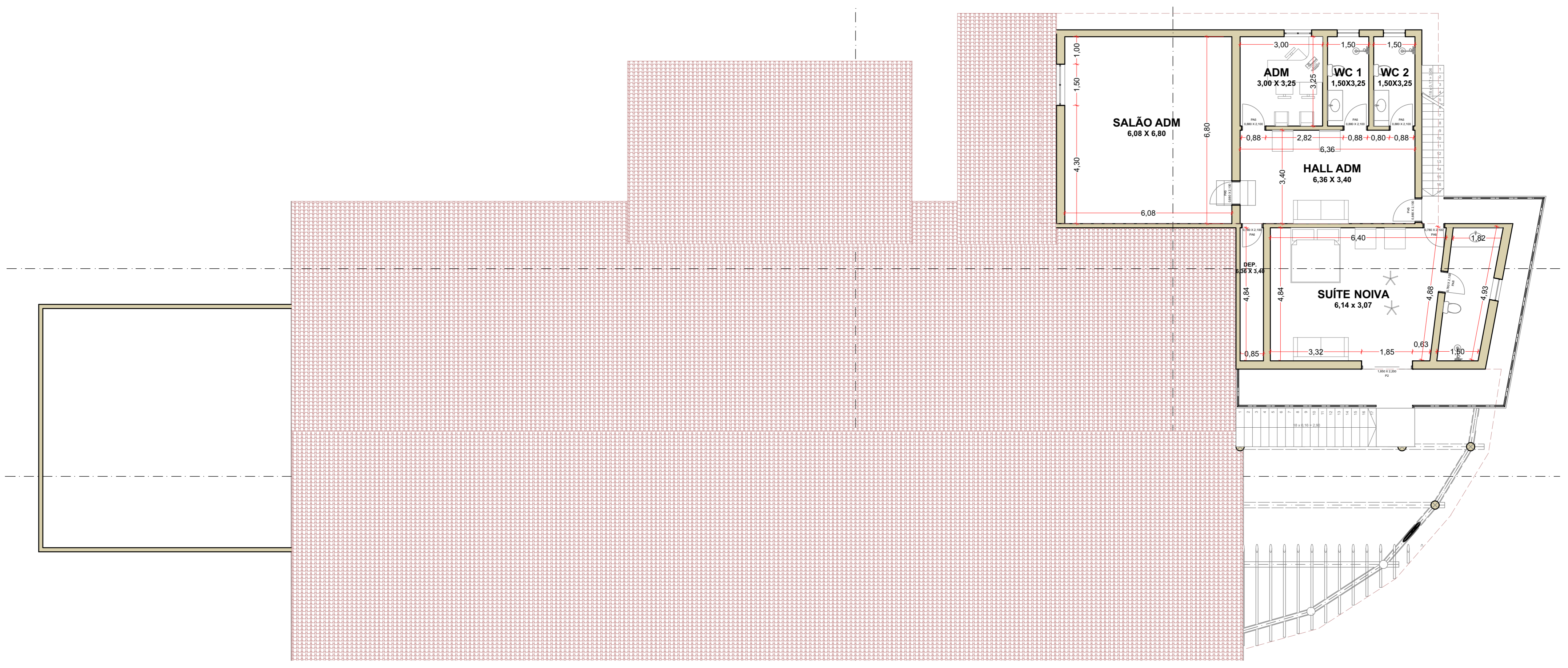
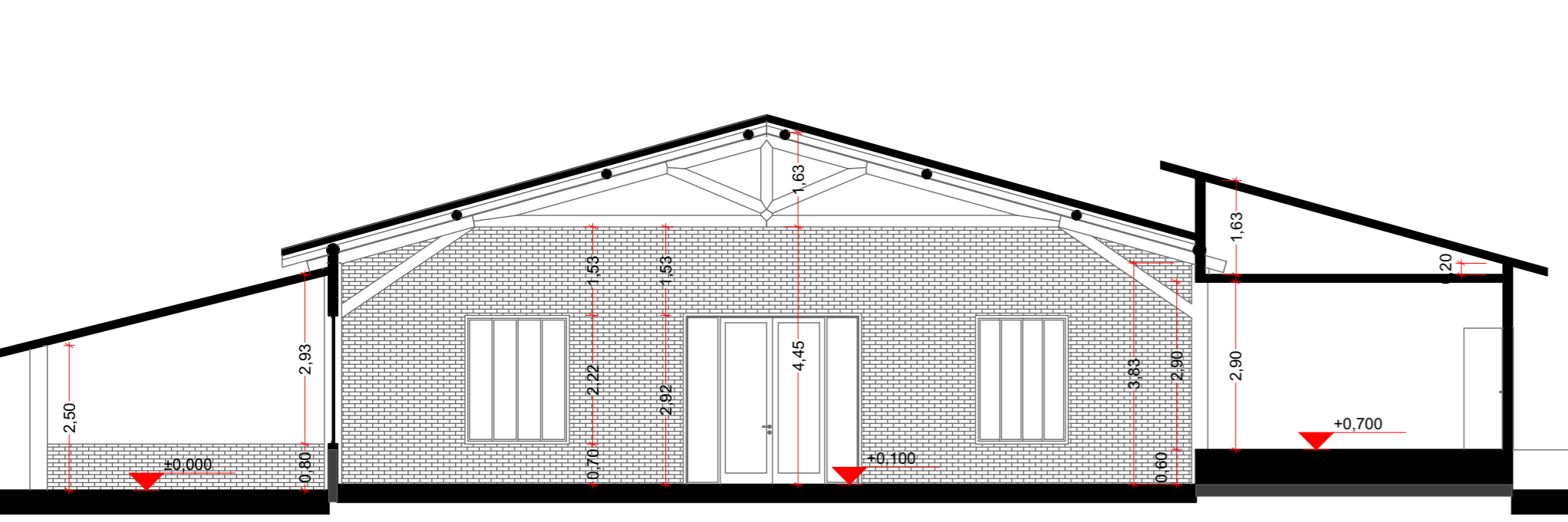


PLANTA BAIXA - PAVIMENTO TÉRREO
 ÁREA TÉRREO: 1002,29m² ESCALA 1:100

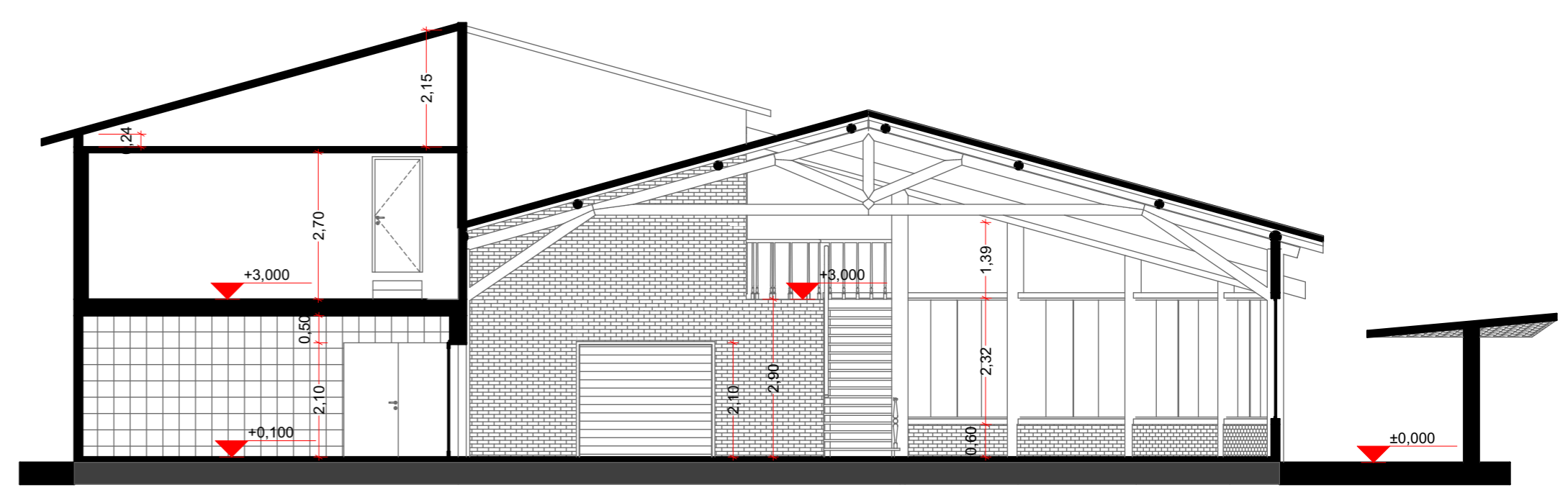


PLANTA BAIXA - PAVIMENTO SUPERIOR
 ÁREA SUPERIOR: 169,22m² ESCALA 1:100



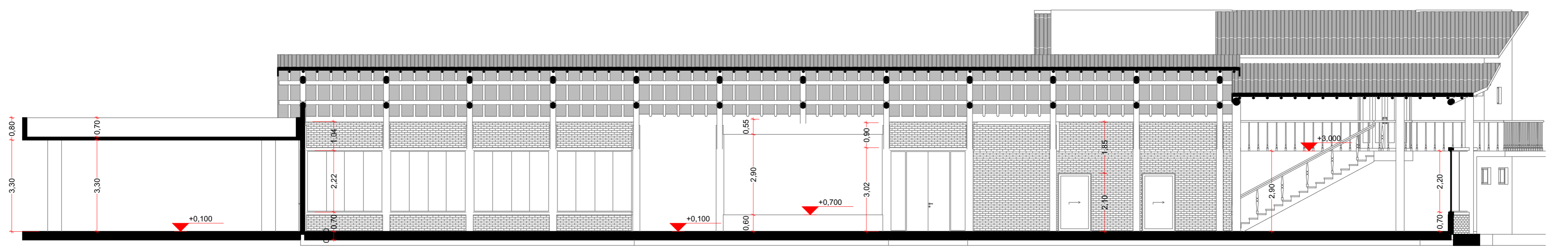
CORTE A-A

1:100



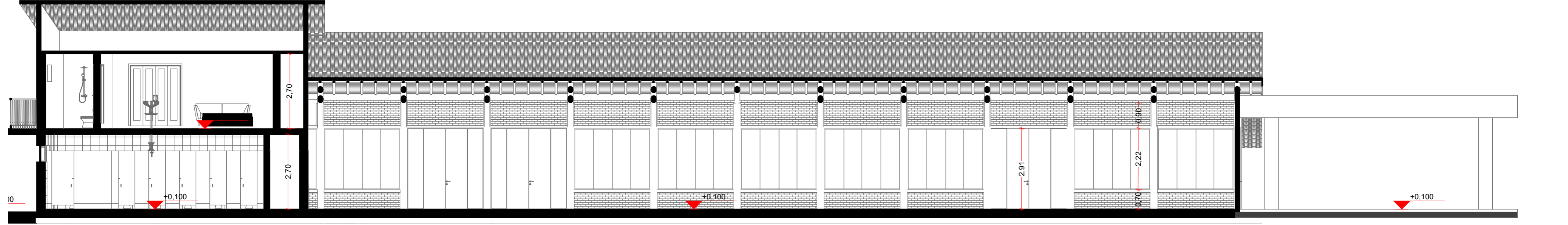
CORTE B-B

1:100



CORTE C-C

1:100



CORTE D-D

1:100